

Standard Rotary Actuator SA61 Series

FOR OPERATION OF AIR CONTROL DAMPERS IN HVAC AND ALL KINDS OF MACHINE SYSTEM

PRODUCT DATA AND INSTALLATION INSTRUCTIONS

BENEFITS

- Torque: 8Nm; 16Nm; 24Nm; 32Nm
- Nominal voltage: AC100...240V
- Control: On/Off /2-Point/3-Point
- -KF type include 2 groups of auxiliary switches

TECHNICAL SPECIFICATIONS

Electric data

Rated voltage	AC24V 50/60Hz DC24V /AC100...240V 50/60Hz
Rated voltage range	AC/DC19.2...28.8V/AC85...265V
Power consumption	Operating state 4.5, Standby state 0.5W
Cable size	0.5 mm ²
Terminal Specification	Max.2.0mm ²

Functional data

Rotating direction	Can be selected by DIP switch
Manual operation	Actuator can be manually adjusted after pressing the gear set disengagement button

Maximum corner	95°
Noise level	46db
Position indication	Mechanical indication

Operating conditions

Electrical grade	III (Safelow voltage), II (Double insulated)
IP grade	IP54
Working temp	-20...+50 C
Storage temp	-30...+80 C
Temperature test	95%RH, No condensing / EN 60730-1

Dimension/Weigh

Length of shaft	> 50mm
Weight	< 1.3Kg

CONTENTS OF DELIVERY

The deliver includes (in the case of individual packages)

The following part:

- 1 SA61 General Damper Actuator
- 1 Data sheet with installation information

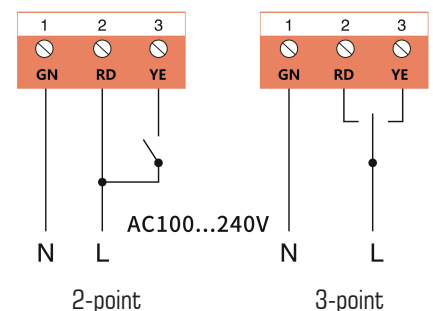


OPERATING RANGES

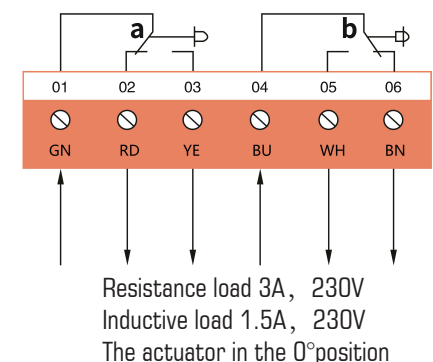
Parameter \ SA61	-08230-K/KF	-16230-K/KF	-24230-K/KF	-32230-K/KF
Torque	8Nm	16Nm	24Nm	32Nm
Running time	30S~45S (95°)	30S~55S (95°)	120S~160S (95°)	160S~200S (95°)

WIRING DIAGRAM

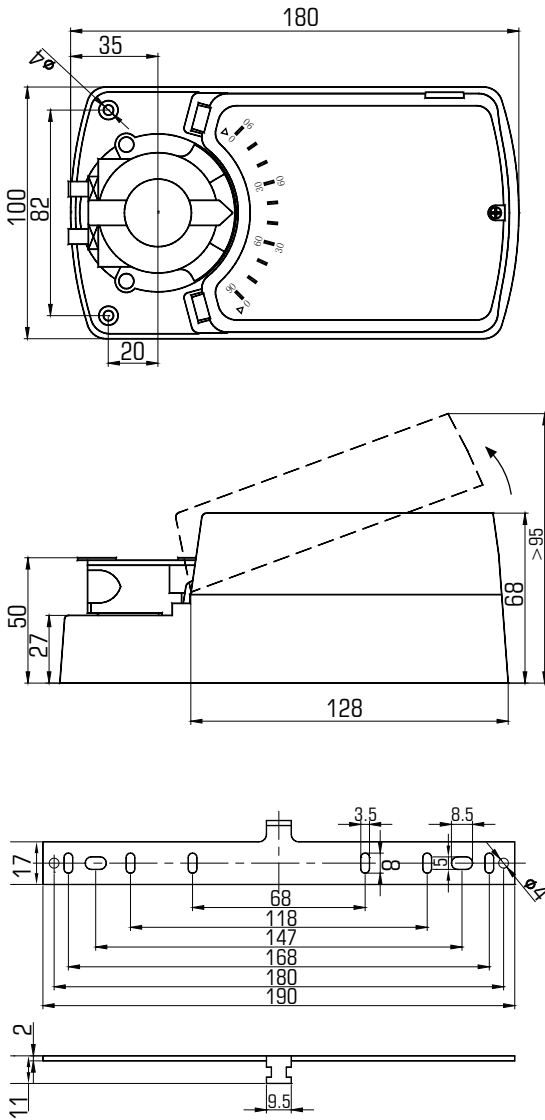
Actuator



Auxiliary switch



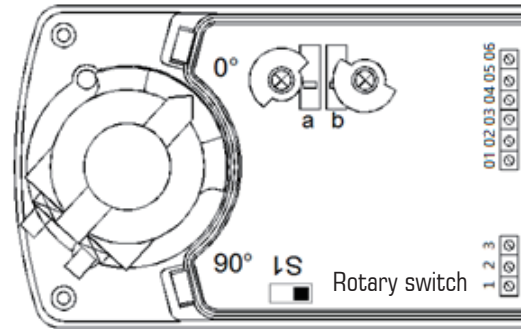
DIMENSIONS IN mm



CAUTION

1. The Damper Actuator is not allowed to be used outside the specified field of application, especially in aircraft.
2. The enclosure of the actuator equipment may only be opened by the manufacturer. It contains no components which the user can replace or repair.
3. The device contains electrical and electronic components and is not allowed to be disposed of as household refuse. All locally valid regulations and requirements must be observed.

SWITCH THE DIRECTION OF ROTATION



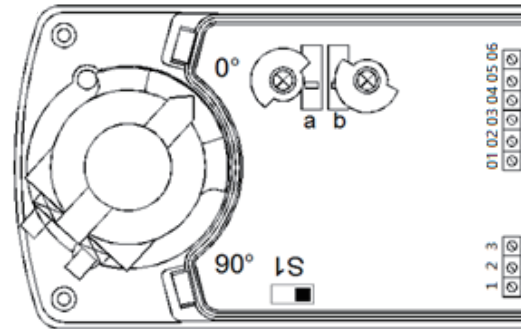
Factory setting:

Terminal 1,2 has power supply, the actuator rotates anticlockwise.

Power supply	Terminal 1,2	Terminal 1,3
direction of rotation	anticlockwise	clockwise

The direction of rotation can be changed by the motor pin.

-OS MODELS ADJUST THE AUXILIARY SWITCH



Factory setting:

Switch a	Terminal 01,02	Terminal 01,03
0-10°	Short circuit	Open circuit
10-90°	Open circuit	Short circuit

Switch b	Terminal 04,05	Terminal 04,06
0-80°	Open circuit	Short circuit
80-90°	Short circuit	Open circuit

* According to customer order requirement set switch angle

Anwoll

ANWOLL INDUSTRIES, INC

5634 Grand Floral Blvd. Houston,
TX 77041 USA

VERSION-JAN-2024-V01