

Pressure Switches PS31 Series FOR REFRIGERATING SYSTEM, USER-ADJUSTABLE

PRODUCT DATA AND INSTALLATION INSTRUCTIONS

APPLICATION

The pressure switch controls the start and stop of compressors and fans in refrigeration systems, and can also be used in water pumps, fire, and POTS furnace, hydraulic, ironing and other devices play a safety protection role.

BENEFITS

Pressure and pressure difference can be adjusted, the top provides cover protection, improve the protection level.

TECHNICAL SPECIFICATIONS

Pressure media	R22,R134a,air,liquid
Process connection	1/4SAE male,G1/4 male, The threads can be customized
Switching capacity	FL8A/FR48A at 240VAC FL16A/FR72A at 120VAC
Electrical connections	Screw terminals
Cable interface	6-14mm diameter cable sealing interface
Protection class	IP20,IP30(with bracket and cover),IP44(with bracket, cover, and cap),IP55(with integral cover)
Mounting lugs	Integrated in bottom housing
Medium temperature	-40...120°C[-40...248°F]
Ambient temperature	-20...65°C[-13...149°F]

CONTENTS OF DELIVERY

The deliver includes (in the case of individual packages)

The following part:

- 1 PS31 Pressure Switch
- 1 Data sheet with installation information



- 1 Set of mounting accessories:
 1 cover cover for switch top protection
 1 L-shaped mounting bracket and 2 short screw

APPROVALS

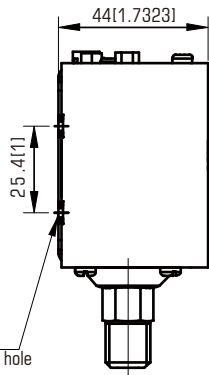
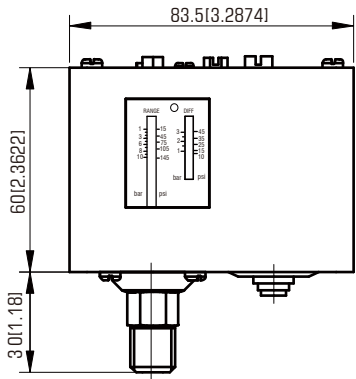


OPERATING RANGES

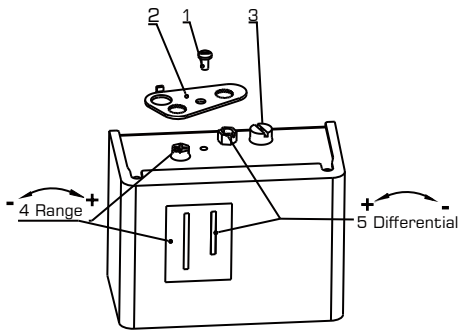
type	pressure range	differential pressure range
PS31-02	-0.5...2bar	0.2...0.7bar
PS31-03	-0.5...3bar	0.35...1.5bar
PS31-06	-0.5...6bar	0.6...4bar
PS31-08	-0.2...7.5bar	0.7...4bar
PS31-10	1...10bar	1...3bar
PS31-14	2...14bar	1...4bar
PS31-16	3...16bar	1...4bar
PS31-20	5...20bar	2...5bar
PS31-30D	5...30bar	3...10bar
PS31-32	8...32bar	2...6bar
PS31-42	8...42bar	4...10bar

1bar=100kPa=0.1MPa=14.5psi

DIMENSIONS IN mm[in]



2-M4[0.1575]
Mounting bracket hole



OPTIONS / ACCESSORIES

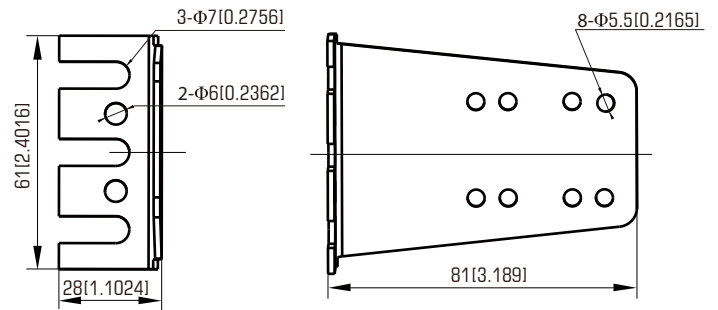


Figure 1
Bracket
Mounting screws

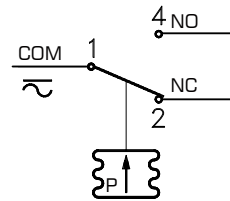


Figure 2
Arrangement of contacts



CAUTION

Switch off power before removing cover!

Fig.1. Dimensions of PS31 Series pressure switches

4 = Adjust the point pressure value by turning the screw
5 = Adjust the difference pressure value by turning the screw

Anwoll

ANWOLL INDUSTRIES, INC

5634 Grand Floral Blvd. Houston,
TX 77041 USA