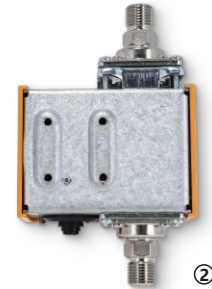


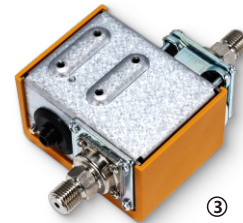
DIFFERENTIAL PRESSURE SWITCH MODEL DPS33



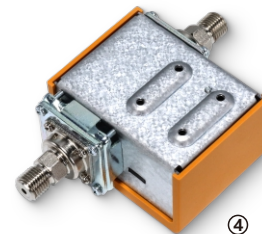
①



②



③



④

1)DPS33 front view 2)DPS33 back view 3)DPS33 thread view 4)DPS33 thread view

The DPS33 differential pressure switch features highly sensitive pressure sensors on both sides that trigger the switch mechanism to control equipment like motor-driven valves. It's typically used to manage pressure differences between supply and return pipes in water and oil systems. For example, it can control a valve in the bypass near the pump; when the pressure difference exceeds the set value, the valve opens or closes to maintain normal system operation.

Features

- Adjustable design for differential pressure setting
- Manual reset and automatic reset modes are optional
- Using bellows for pressure transfer, it has the characteristics of stable linear pressure coefficient and long life
- Various mounting modes of mounting brackets can be customized

Technical parameter

General

Basic information

Process connection	1/4SAE male,G1/4 male,M12*1.25 male
Cable diameter	6-14mm
Tests/Admissions	UL508

Electrical overview

Switching load	FL8A/LR48A at 240VAC FL16A/LR72A at 120VAC
Dielectric strength	1500V/one minute without breakdown

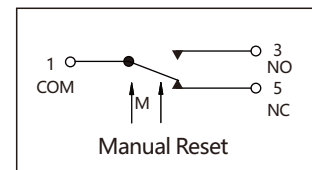
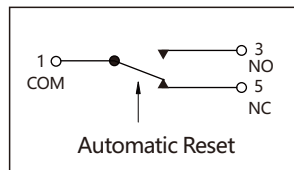
Installation arrangement

Installation torque	2N*M
Factory set	Vertical, pressure connections facing downwards

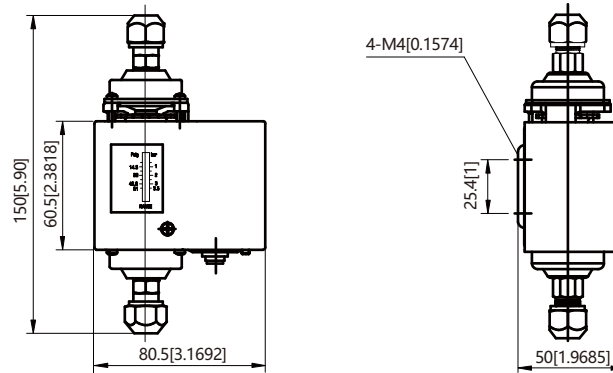
Operating conditions

Medium	Refrigerant,air,water,oil
Temperature	Medium:-40...+120°C[-40...+248°F] Ambient:-20...+65°C[-4...+149°F]
IP grade	IP20

Contact version



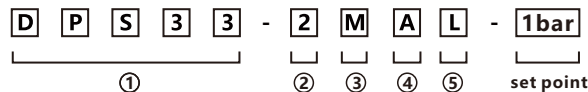
Dimensiones in mm(in)



Ordering information

Example part number:DPS33-2MAL-1bar

Model DPS33 differential pressure switch,differential pressure range:0.5...2bar,reset type>manual;connection size:1/4sae male,L type bracket,set point:1bar.



①	②				③	④	⑤
Name	Model	Pressure range	Factory setting	Max. working pressure	Reset type	Connection size	Bracket
DPS33	2	0.5...2 bar	0.5 bar	17 bar	A Auto	A 1/4 sae male	N No bracket
	4	0.5...3.5 bar	1 bar	17 bar	M Manual	B G1/4 male	P Plate type
	4H	0.5...3.5 bar	1 bar	33 bar		I M12*1.25 male	L L type
	6	1...6 bar	1 bar	17 bar			U U type
	6H	1...6 bar	1 bar	33 bar			

Please make separate remarks for special requirements.